

HUDSON HOMES

Home and Land Package



HAMPTONS FACADE TYPICAL WIDTH LOT

Watagan Park Estate - Cooranbong NSW

1363 Eagles Ridge Cooranbong NSW 2265

Starting From

\$1,036,888

Land Size 525.0 m² Land Price \$538,888

4
 2
 2
 254.56 m²

H2

H2: Designer Inclusions

See next page for details

House Length 21.23 M

House Width 12.59 M

IVORY 27

The Ivory offers a stunning, contemporary design for the growing family. With large, broad living and entertaining spaces around a central family hub, this home caters to the individual needs of each member of the family.



11-05-2026

Our Guarantees

At Hudson Homes we understand the importance of time and money. And since delivering upon our promise to you is at the heart of everything we do, every customer is offered peace-of-mind and security with our **quality build guarantee** and our **time frame guarantee**.

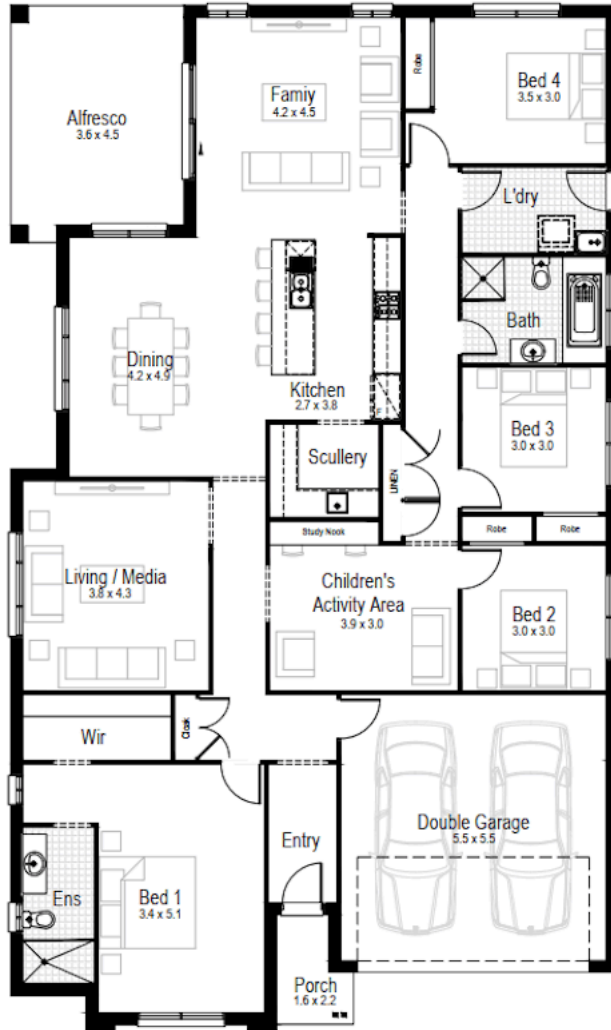
ENQUIRE NOW

STEVE SLISAR

0483950830

steve.slisar@hudsonhomes.com.au

Indicative only



SPECTRUM
DESIGN STUDIO

**COMPLIMENTARY
CONSULTATION**

Includes a free personal
home consultation with
a professional designer

H2 H2: Designer Inclusions

- Automatic garage door with 2 remotes
- Fully finished tiled outdoor alfresco
- Flyscreens to all opening windows and sliding doors
- House facade as nominated
- Site costs and BASIX requirements
- Colourbond steel roofing
- 2590mm ceiling heights throughout
- Fully lined kitchen cabinetry with overhead cupboards and bulkhead
- 20mm stone benchtops to kitchen, bathrooms and laundry
- QUALITY appliances - Stainless steel appliances including freestanding cooker, canopy rangehood, dishwasher and built-in microwave
- Ducted air conditioning system
- Contemporary floating style bathroom vanity units
- Ceramic tiles to all bathrooms and laundry
- Floor tiles to entry, family, kitchen and meals areas
- Carpet to all other areas
- Dulux paint system to ceilings and walls

ENQUIRE NOW

STEVE SLISAR

0483950830

steve.slisar@hudsonhomes.com.au