

HUDSON HOMES

FULL TURN KEY H&L



HARMONY FACADE

Bayside House and Land

Lot 1 / 37-39 Schmidt Street Victoria Point Schmidt Street
Victoria Point QLD 4165

Starting From

\$1,191,900

Land Size 400.0 m² Land Price \$770,000

4
 2
 2
 181.13 m²

FHB **FHB: First Home Buyer**
See next page for details

LP **LP: Landscaping Package**
See next page for details

House Length 24.95 M

House Width 8.51 M

CORAL 19

The Coral features a larger home designed into a compact single storey, suited well to a narrow block. Greeted by a long entry hallway, this home is an entertainer's delight with a formal living room or home theatre towards the front and an open plan style kitchen dining area at the rear, leading onto the generous alfresco.



14-04-2026

Our Guarantees

At Hudson Homes we understand the importance of time and money. And since delivering upon our promise to you is at the heart of everything we do, every customer is offered peace-of-mind and security with our **quality build guarantee** and our **time frame guarantee**.

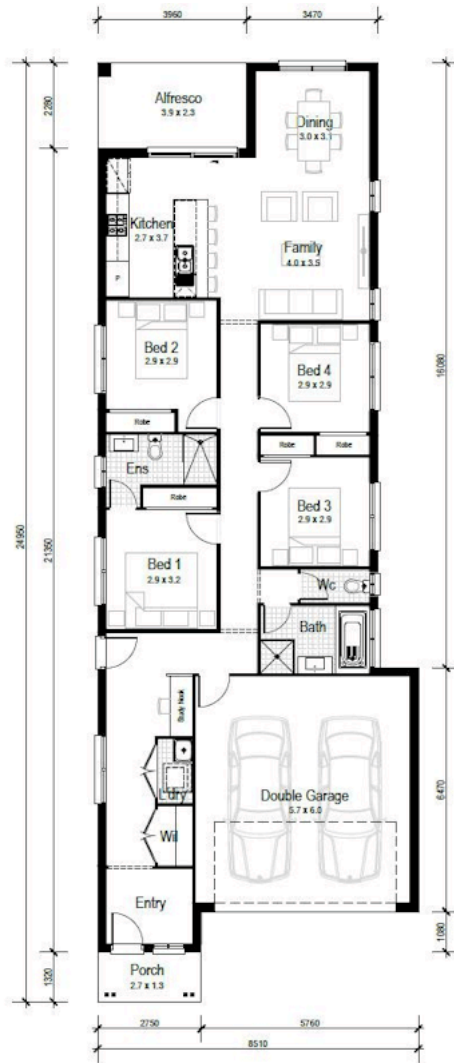
ENQUIRE NOW

ROSE VITAGLIANO

0402365844

rose.trimbounas@hudsonhomes.com.au

Indicative only



SPECTRUM
DESIGN STUDIO

**COMPLIMENTARY
CONSULTATION**

Includes a free personal
home consultation with
a professional designer

FHB FHB: First Home Buyer

LP LP: Landscaping Package

- Ducted air conditioning system
- LED downlights throughout
- Automatic garage door with 2 remotes
- Fully finished tiled outdoor alfresco
- Roller blinds, flyscreens and keyed locks throughout
- Fully lined kitchen cabinetry with overhead cupboards and bulkhead
- 20mm stone benchtop with large sink to kitchen
- 600mm stainless steel gas cooktop and recirculating pull-out rangehood
- 600mm stainless steel electric oven
- Stainless steel dishwasher installed into kitchen cabinets
- Contemporary floating style vanities, mirrors and accessories to all bathrooms
- 1650mm bathtub as indicated in floorplan
- Ceramic tiles to bathroom, ensuite and laundry

- Ceramic tiles to entry, family, kitchen, meals areas, alfresco and patio
- Carpet to bedrooms and all other areas
- Quality paint system to ceilings and walls
- Slimline water tank
- NBN provision
- Finished driveway with path
- Lawn turf to front and back
- Front garden bed with Australian native shrubs and edging
- Fencing to suit covenant/estate requirements
- Colorbond letterbox
- Outdoor slimline single-fold clothesline
- House numbers

ENQUIRE NOW

ROSE VITAGLIANO

0402365844

rose.trimbounas@hudsonhomes.com.au