









Viridian

vi-rid-i-an: composed more of green than blue, this pigment takes its name from the Latin word 'viridis', meaning 'green'.

The Viridian is an undeniably stylish and contemporary home design. Packed with a myriad of features, this is a two-storey home where nothing has been overlooked: separate open plan living areas, full-sized office, separate scullery, outdoor alfresco area and a signature dining area with a magnificent void that stretches to the very top of the second floor makes this an easy choice for the family that wants it all.

PERFECT FOR

-  Large block
-  Knock-Down, Rebuild
-  Big families
-  Entertainers
-  Growing families
-  Home theatre option
-  Home office option
-  Scullery included



Facades



Ascot



Centro



Classic



Metro



Grande



Hamptons



Monash



Nuvo



Oxford



Tempo



Riviera



Soho



Statesman



Vogue



Windsor

Other compatible facades

Allure
Ashton
Breeze

Cambridge
Chateaux
Como

Contemporary
Delta
Deluxe

Flair
Mondo
Novare

Regal
Royale
Saville

12.61 m

MINIMUM LOT WIDTH

STCC (Subject to Council Conditions)



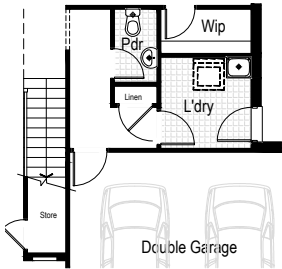
Viridian 28

4 2.5 2

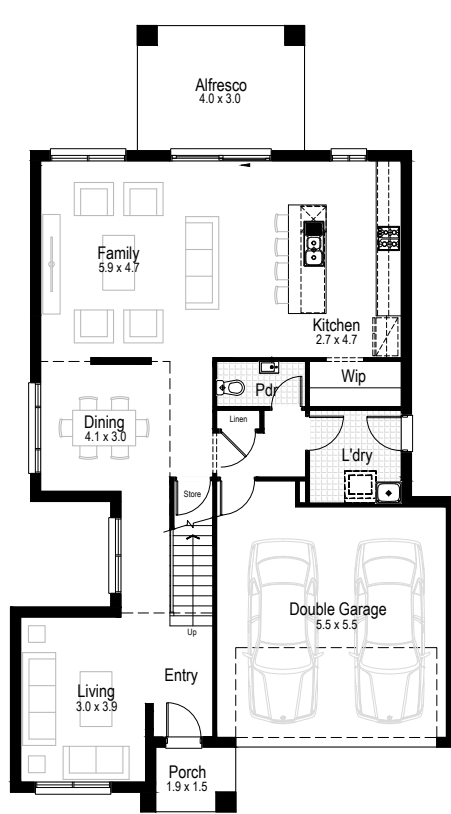


WINNER 2017

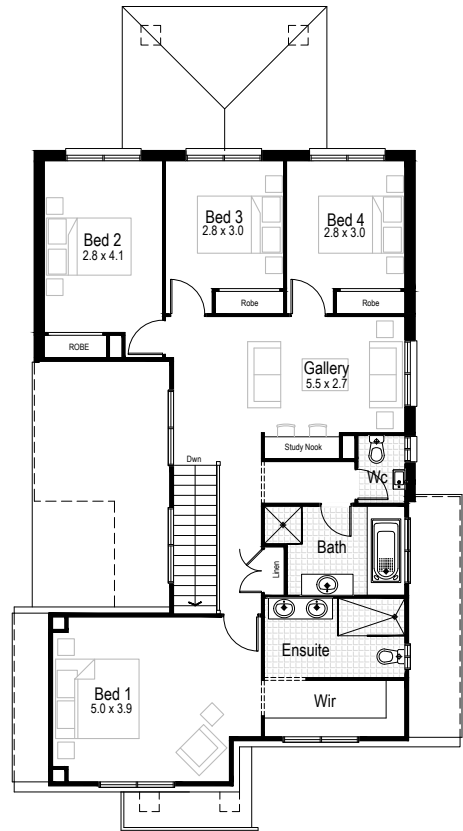
HIA CSR NSW
Display Home
\$350,001 - \$400,000



Option
Alternate staircase
orientation



Ground floor



First floor



Ground floor
living area
102.70 m²



First floor
living area
111.93 m²



Garage
34.44 m²



Alfresco
12.00 m²



Porch
2.98 m²



Overall width
10.67 m



Overall length
18.82 m



Total area
264.05 m²

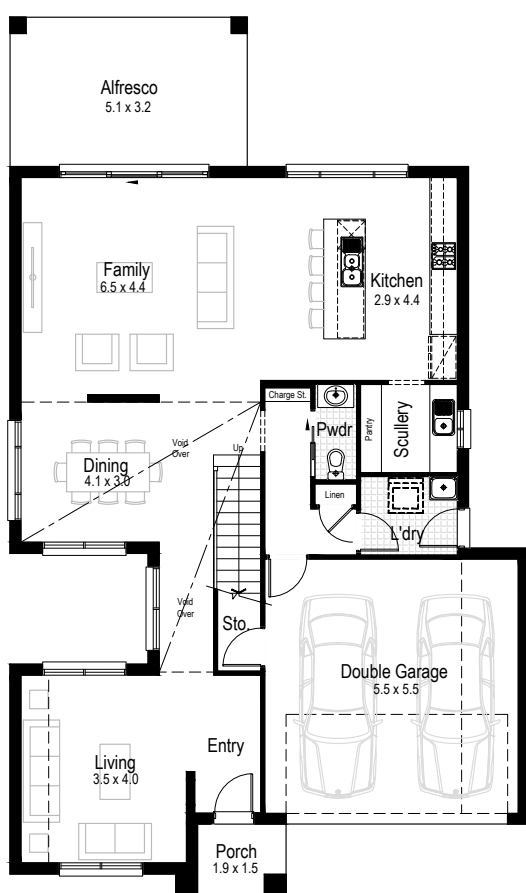
13.39 m

MINIMUM LOT WIDTH

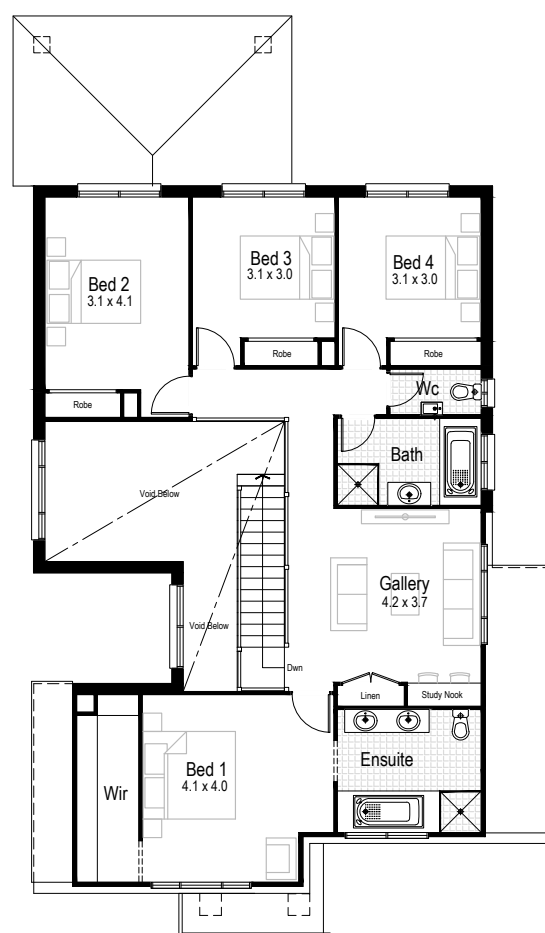
STCC (Subject to Council Conditions)

Viridian 32

4 2.5 2



Ground floor



First floor



Ground floor living area
113.96 m²



First floor living area
134.82 m²



Garage
33.32 m²



Alfresco
16.68 m²



Porch
2.99 m²



Overall width
11.27 m



Overall length
19.06 m



Total area
301.77 m²

14.91 m









MINIMUM LOT WIDTH

STCC (Subject to Council Conditions)




Viridian 39

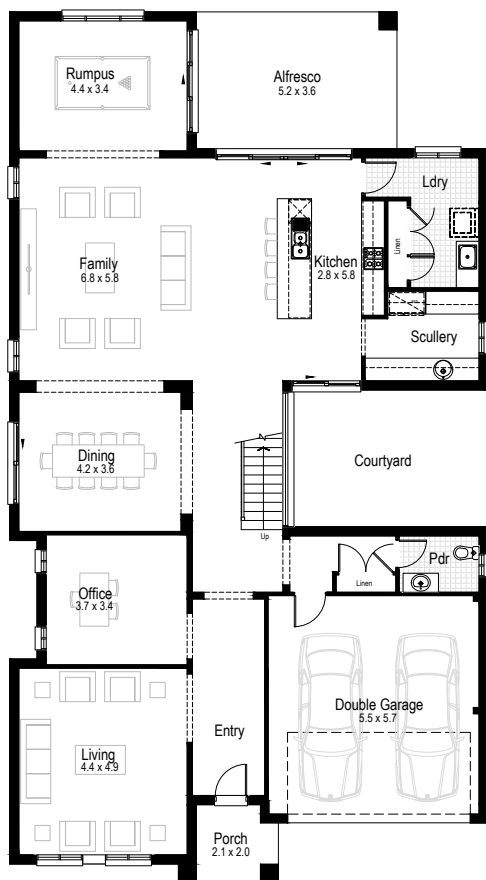
 4  2.5  2



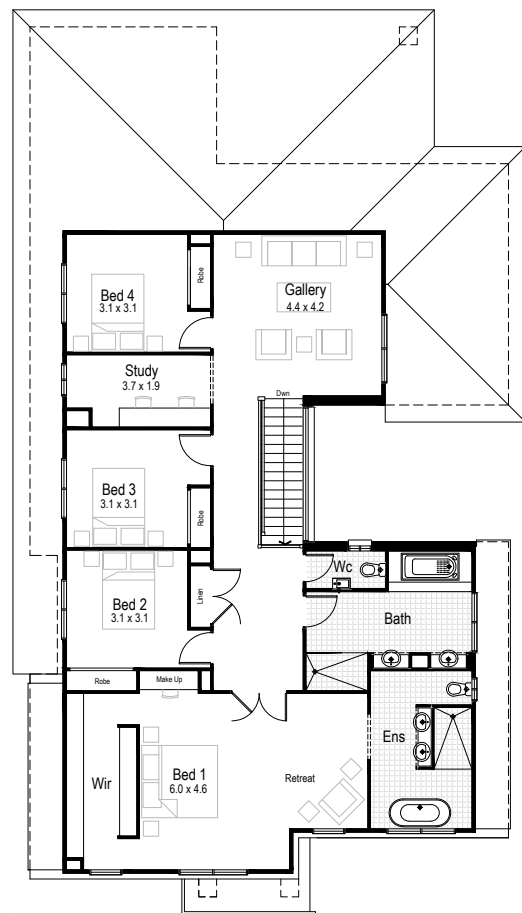
							
Ground floor living area	First floor living area	Garage	Alfresco	Porch	Overall width	Overall length	Total area
149.68 m ²	152.60 m ²	36.39 m ²	17.24 m ²	4.94 m ²	13.07 m	20.86 m	360.85 m ²

Viridian 43

 4
  2.5
  2



Ground floor



First floor



Ground floor living area
190.20 m²



First floor living area
151.89 m²



Garage
34.72 m²



Alfresco
19.01 m²



Porch
4.18 m²



Overall width
12.59 m



Overall length
22.90 m



Total area
400.00 m²

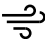







COMPLETE YOUR DREAM HOME

SELECT AN INCLUSIONS PACKAGE
TO SUIT YOUR STYLE AND BUDGET



WE CALL THEM NECESSITIES. **NOT UPGRADES**

When our team created our range of inclusions packages, we decided to select items that you will need at every stage of your life. That's why our standard inclusions packages include:

- | | |
|---|---|
|  Air Conditioning |  Automatic Garage Door |
|  Tiled Outdoor Alfresco |  Site Costs for Standard Lot* |
|  Carpet and Tiles Throughout |  Quality Stainless Steel Appliances |
|  Built-in Robes with Mirrored Sliding Doors |  PLUS SO MUCH MORE |

Pick up a brochure or visit hudsonhomes.com.au

*Site costs for a standard, cleared block with up to 1m fall across the building platform and up to M class slab



hudsonhomes.com.au

1300 246 700

Let's be friends

