

# FIXED PRICE

## Home and Land Package



Classic Facade

### Mount View Grange

Lot 716, Vintner Street, Bellbird  
NSW 2325

Expected Rego Date: Now Registered

# \$336,900

Land Size: 651.3m<sup>2</sup>

Land Price: \$

**Jasper 24**

The Jasper is the family home that keeps on giving. Designed to feel much bigger than it is, this single storey design features multiple living areas throughout the home, so there is room for everyone for every occasion.

- 4
- 2
- 2
- 219.83m<sup>2</sup>

H1

H1: Smart Inclusions Package

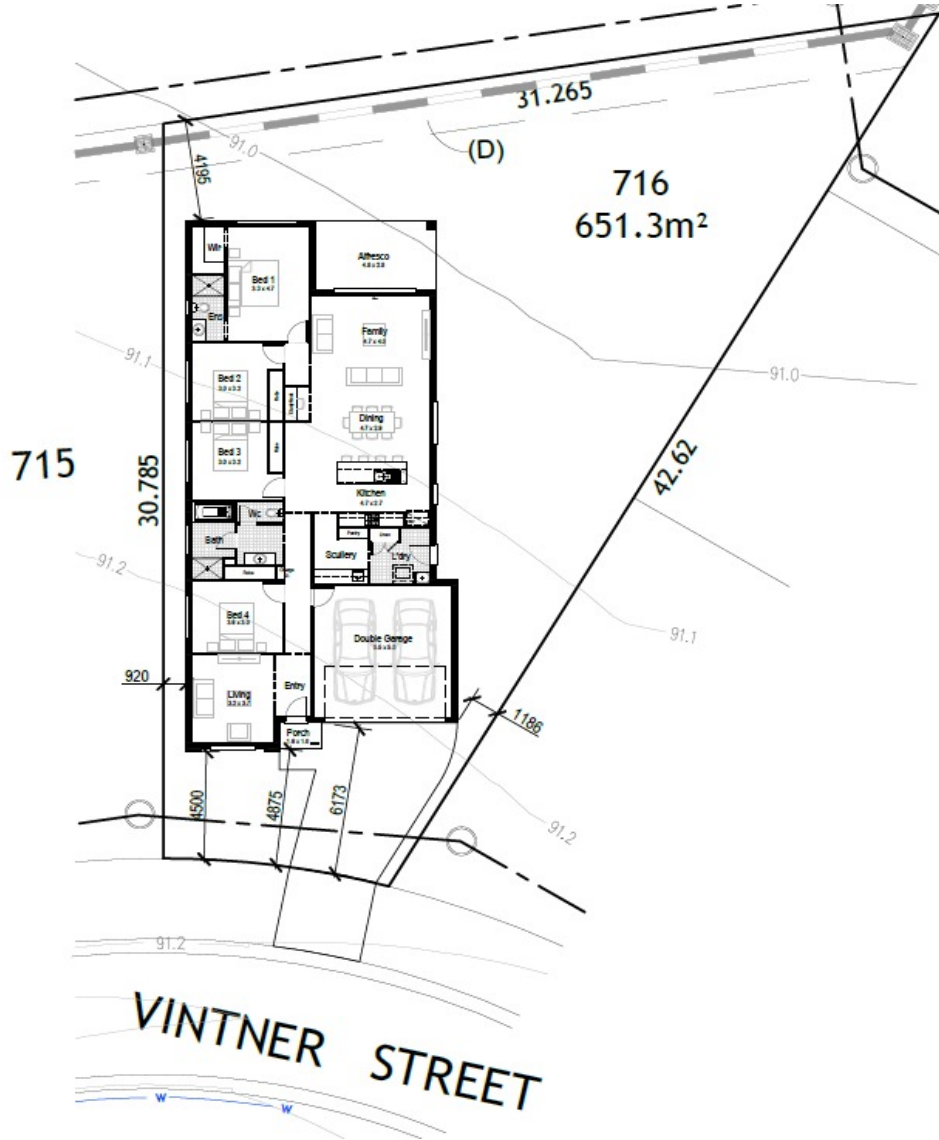
See next page for details

Living Area	171m <sup>2</sup>	Porch	1.81m <sup>2</sup>
Garage	33.20m <sup>2</sup>		
Alfresco	13.82m <sup>2</sup>		




### Our Guarantees

At Hudson Homes we understand the importance of time and money. And since delivering upon our promised to you is at the heart of everything we do, every customer is offered a peace-of-mind and security with our fixed price guarantee and our time frame guarantee.



**H1 H1: Smart Inclusions Package**

- House facade as nominated
- Split System A/C
- Site costs and BASIX
- Full lined kitchen cabinetry with overhead cupboards and bulkhead
- Westinghouse stainless steel cooktop and oven
- Westinghouse recirculating pull-out rangehood
- Contemporary floating style bathroom vanity units
- Ceramic tiles to all bathrooms and laundry
- Tiling to entry, family, kitchen and meals areas
- Carpet to all other internal areas
- Taubmans Endure paint system to ceilings and walls
- Automatic Colorbond garage door with 2 remotes
- Oyster style light fittings throughout
- Fully finished tiled outdoor alfresco
- Slimline water tank



**SPECTRUM**  
DESIGN STUDIO

**COMPLIMENTARY SESSION**  
Includes a free personal consultation with a professional interior designer